

## Position Description

<b>Position</b>	<b>Clinical Nurse Specialist – Inpatient Rehabilitation</b>
<b>Team / Service</b>	Inpatient Older Adults, Rehabilitation and Allied Health (ORA)
<b>Group / Directorate</b>	Community, Allied Health and Older Adult
<b>District</b>	Capital, Coast and Hutt Valley
<b>Responsible to</b>	Charge Nurse Manager - Kenepuru Rehabilitation & Surgical
<b>Children's Act 2014</b>	This position is classified as a children's worker, requiring a safety check including police vetting before commencing and every three years
<b>Location</b>	<p>This position is expected to work from Wellington and Kenepuru Campuses</p> <p>From time to time as part of Variance Response you may be required to work in other areas.</p>

## Te Whatu Ora

The Health System in Aotearoa is entering a period of transformation as we implement the Pae Ora/ Healthy Futures vision of a reformed system where people live longer in good health, have improved quality of life, and there is equity between all groups.

We want to build a healthcare system that works collectively and cohesively around a shared set of values and a culture that enables everyone to bring their best to work and feel proud when they go home to their whānau, friends and community. The reforms are expected to achieve five system shifts. These are:

1. The health system will reinforce Te Tiriti principles and obligations
2. All people will be able to access a comprehensive range of support in their local communities to help them stay well
3. Everyone will have equal access to high quality emergency and specialist care when they need it
4. Digital services will provide more people the care they need in their homes and communities
5. Health and care workers will be valued and well-trained for the future health system

## Context

Capital, Coast and Hutt Valley district provides hospital and health services in primary, secondary and tertiary healthcare to a total population base of approximately 445,000 citizens.

We are accountable for meeting the needs of and improving health outcomes for all the constituent populations of our district, and the region more broadly. Together we:

- provide secondary and tertiary, medical and surgical hospital services alongside community based health care
- fund local health providers and work collaboratively with the community to create and support multiple health education initiatives and projects within the region

- deliver health services directly as well as contracting external providers
- provide local, sub-regional, regional and national health services as well as community-based health, rehabilitation and support services.

The majority of the district's population live in Wellington and Lower Hutt. The Māori and Pacific populations of Lower Hutt and Wellington are proportionally similar, with the largest Pacific population in the region in Porirua. Kapiti and Upper Hutt have similar numbers of Māori and Pacific people. Most people are enrolled with a GP near their place of residence, so the increasing focus on community-based healthcare is expected to lead to better health outcomes for these population groups. Hutt Hospital provides secondary and some tertiary, medical and surgical hospital services alongside community based health care from its main facility in Lower Hutt City. In addition to funding local health providers and working collaboratively with the community to create and support multiple health education initiatives and projects, Hutt Hospital is the centre for five tertiary regional and sub-regional services - Plastics, Maxillofacial and Burns Services Rheumatology Dental Services Regional Public Health and Regional (Breast and Cervical) Screening Services.

Wellington Regional Hospital in Newtown is the region's main tertiary hospital with services such as complex specialist and acute procedures, intensive care, cardiac surgery, cancer care, neurosurgery and renal care. The hospital is the key tertiary referral centre for the lower half of the North Island and the upper half of the South Island.

Kenepuru Community Hospital and Kapiti Health Centre provide secondary and community services based in Porirua and the Kapiti Coast

MHAIDS is the mental health, addictions and intellectual disability service for the Wairarapa District and Capital, Coast and Hutt Valley District, with multiple specialist facilities. Ratonga Rua-o- Porirua is our forensic, rehabilitation and intellectual disability inpatient unit.

## Te Tiriti o Waitangi and Māori Health Outcomes

---

Māori are the indigenous peoples of Aotearoa. We have particular responsibilities and accountabilities through this founding document of Aotearoa. We value Te Tiriti and have adopted the following four goals, developed by the Ministry of Health, each expressed in terms of mana and the principles of:

- |                        |  |
|------------------------|--|
| <b>Mana whakahaere</b> | Effective and appropriate stewardship or kaitiakitanga over the health and disability system. This goes beyond the management of assets or resources.  |
| <b>Mana motuhake</b>   | Enabling the right for Māori to be Māori (Māori self-determination) to exercise their authority over their lives, and to live on Māori terms and according to Māori philosophies, values and practices including tikanga Māori.          |
| <b>Mana tāngata</b>    | Achieving equity in health and disability outcomes for Māori across the life course and contributing to Māori wellness.  |
| <b>Mana Māori</b>      | Enabling Ritenga Māori (Māori customary rituals) which are framed by Te Aō Māori (the Māori world), enacted through tikanga Māori (Māori philosophy and customary practices) and encapsulated within mātauranga Māori (Māori knowledge). |

We will target, plan and drive our health services to create equity of health care for Māori to attain good health and well-being, while developing partnerships with the wider social sector to support whole of system change.

## Te Mauri o Rongo

---

Te Mauri o Rongo recognises our connection to this work, to each other, to the people we serve and to our whakapapa. It speaks to specific behaviours that we will expect from each other guided by the pou of Te Mauri o Rongo:

### Wairuatanga

Working with heart, the strong sense of purpose and commitment to service that health workers bring to their mahi.

### Rangatiratanga

As organisations we support our people to lead. We know our people; we will grow those around us and be accountable with them in contributing to Pae Ora for all.

### Whanaungatanga

We are a team, and together a team of teams. Regardless of our role, we work together for a common purpose. We look out for each other and keep each other safe. “Whiria te tangāta” – we will weave our people together.

### Te Korowai Āhuru

A cloak which seeks to provide safety and comfort to the workforce.

## District Responsibility

---

The district leadership have collective accountability for leading with integrity and transparency a progressive, high performing organisation, aimed at improving the health and independence of the community we serve and achieving equitable outcomes for all. The leadership team are responsible for achieving this aim, aligned with our Region, within the available resources, through a skilled, empowered, motivated and supported workforce in line with government and HNZ policy.

Te Whatu Ora is committed to Te Tiriti o Waitangi principles of partnership, participation, equity and protection by ensuring that guidelines for employment policies and procedures are implemented in a way that recognises Māori cultural practices.

We are committed to supporting the principles of Equal Employment Opportunities (EEO) through the provision and practice of equal access, consideration, and encouragement in the areas of employment, training, career development and promotion for all its employees.

## Group Perspective

---

Community, Allied Health and Older Adults Group (CAHOA) provides services to people of all ages in outpatient, community and inpatient settings across Capital, Coast and Hutt Valley District.

Inpatient ORA (Older Adult, Rehabilitation and Allied Health) services operate from all main hospital sites across our District and in community settings. We provide a range of assessment, treatment and rehabilitation services in community, inpatient and outpatient settings. Our services include:

- Acute Health of Older Persons – Acute Frailty Unit, Orthogeriatrics, consult service.
- Health of Older Persons – Kenepuru wards 4 & 5
- Rehabilitation – Kenepuru ward 6
- Surgical Unit – Kenepuru ward 7
- Inpatient Allied Health

Staff work closely together to provide a co-ordinated approach and continuity of care for patients. They collaborate and liaise with colleagues in primary health and with Non-Governmental support agencies to ensure patients are supported once discharged from the service.

Professional oversight within the CAHOA group is provided by the Clinical Director, Clinical Leader, Nursing Director and Directors of Allied Professions. They work collaboratively with Team leaders and Charge Nurse Managers to provide strategic input into service development.

## Service/Team Perspective

---

Kenepuru Rehabilitation (Ward 6) provides inpatient rehabilitation services for the Capital and Coast District at Kenepuru Hospital for people aged from 16 years. Examples of the types of patients who receive rehabilitation include stroke, complex neurological conditions, patients recovering post neurosurgery and amputees.

The Rehabilitation Service has a strong focus on interdisciplinary practice and this role will work in partnership with Allied Health and the Medical Team to enhance patient care, health outcomes and patient flow.

The CNS is a key part of the Inpatient Kenepuru rehabilitation service and in this role will work across both Wellington and Kenepuru Hospitals to support patient care and pathways.

## Role Purpose

---

Rehabilitation patients have complex medical and biopsychosocial needs requiring coordinated care across multiple disciplines. The Clinical Nurse Specialist (CNS) will provide specialist nursing advice, care and expertise in supporting other staff caring for patients with inpatient rehabilitation needs.

The focus is on assisting, directing and supporting patient care and whānau within the inpatient settings at Wellington and Kenepuru Hospitals. The CNS role through modelling expert clinical skills, promoting best practice, facilitating interdisciplinary collaboration and providing education supports excellence in practice.

The CNS will work closely with Consultant and Advanced Allied Health clinicians, rehabilitation educators and Senior Medical Officers in ensuring excellence in patient care and support the development and achievement of the strategic direction for rehabilitation services within the Community, Allied Health and Older Adult Service.

The CNS leads developing and implementing speciality specific pathways, protocols and guidelines, in accordance with relevant national and international standards and guidance. This includes evaluating standards of care, in line with research, policy and evidenced-based practice across a range of settings.

The CNS – Inpatient Rehabilitation uses advanced nursing knowledge and skills to:

- Uses assessment, advanced clinical reasoning and coordination of care skills to facilitate patients discharge from acute wards to the appropriate 'care pathway' – including - early supported discharge/community pathways, inpatient rehabilitation, Residential Care with community follow up +/- readmission to inpatient rehabilitation as required
- Monitors complex patient's progress against expected outcomes and supports team with clinical problem solving.
- Reduces length of stay in rehabilitation ward by supporting nursing and allied health staff to provide high standard, appropriate rehab care by identifying client rehabilitation needs on referral to inpatient rehabilitation and supporting progress of care while in the rehabilitation ward.
- Drive coordinated clinical processes that lead to good patient outcomes- goals setting, treatment planning, strong multi-disciplinary meetings, whanau meetings, patient centred care/practices
- Lead care coordination for patient requiring rehabilitation
- Monitor and measure quality of patient outcomes in the inpatient rehabilitation service; driving improvements in clinical care and meeting of rehabilitation clinical standards of practice
- Build strong links with rehabilitation facilities around Aotearoa to drive consistent and best care across the motu and consult on the best placement of patients
- Be an active member of rehabilitation team meetings providing advice on the patient's progress leading discussion of clinical progress and care of pt. against initial plans and goals – challenges lack of progress discussed to achieve expected outcomes.
- Provide clinical leadership to address complex care requirements e.g. Rehabilitation patients frequently experience prolonged hospital stays with high risk of complications including pressure injuries, falls, medication management issues, and psychological adjustment challenges.
- Drive staff development and education in conjunction with rehabilitation educators, : This includes competency validation in specialised areas such as neurogenic bladder management, spasticity assessment, and mobility equipment usage
- Participates in the planning and delivery of education for district health professionals involved in providing care for patients with rehabilitation needs.

Note: Request to present to external organisations requires service and nursing leadership approval.

## Key Accountabilities

The following accountabilities are in addition to the NCNZ competencies for registered nurses (RN). The CNS is expected to be Senior Expert (CC) and Expert (HV) on the Professional Development and Recognition Programme (PDRP). Competence is the combination of skills, knowledge, attitudes, values and abilities that underpin effective performance as an advanced practice nurse.

In this Position Description the terms person or patient are used to refer to those who use health services, who in different settings may be referred to as tangata whaiora, health consumer or client.

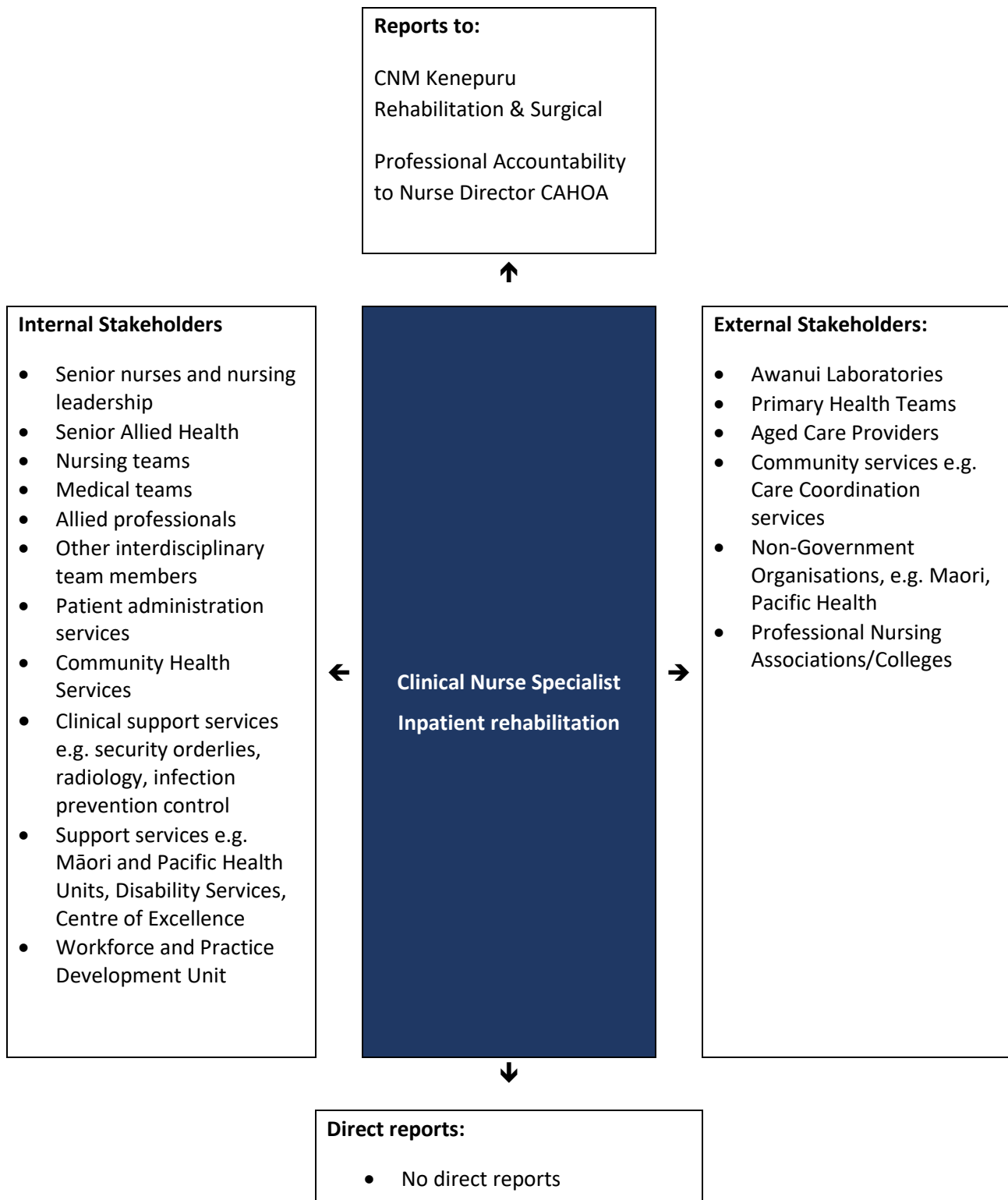
Key accountabilities	Deliverables / Outcomes
<b>1. Professional Accountabilities</b>	<ul style="list-style-type: none"> <li>Accepts responsibility for ensuring their nursing practice and conduct meet the standards of the professional, ethical, and relevant legislated requirements</li> <li>Role models expert and advancing practice and applies the principles of Te Tiriti o Waitangi in nursing practice</li> <li>Contributes to improving inequities by working with colleagues to operationalise Te Whatu Ora's commitment to meet the Pae Ora (Healthy Futures) Act 2022 obligations as Te Tiriti o Waitangi partners.</li> <li>Leads and supports excellence in nursing practice</li> </ul>
<b>2. Provide safe and expert patient care</b>	<ul style="list-style-type: none"> <li>Works directly with patients' whānau and staff in a variety of clinical settings as an expert resource and role model</li> <li>Uses expert knowledge and skills to perform comprehensive patient assessment, plan care, manage complex needs and arrange follow-up for patients, including the whānau where appropriate</li> <li>Clinical knowledge is advanced to meet complex patient needs</li> <li>Prioritises and responds to direct referrals from health professionals or service users in response to identified criteria/ service standards</li> <li>Uses assessment findings to foresee likely course of events and recommend/ implement appropriate changes to patient care</li> <li>Demonstrates sound levels of clinical judgement and ethical decision making in implementing and/or modifying interventions</li> <li>Utilizes effective problem solving skills with service users to reduce hospitalisation duration and facilitate early safe discharge</li> <li>Facilitates a collaborative, interdisciplinary approach to clinical management, assisting access to appropriate diagnostic tests, interventions and therapies</li> <li>Provides effective emotional and informational support to service patient and whānau</li> <li>Accurately documents patient assessment, interventions, referrals and/or follow-ups</li> <li>Uses initiative and clinical judgment in the application of relevant policies, procedures and clinical guidelines</li> <li>Practices autonomously and collaboratively within RN scope of practice, recognises limitations and consults/refers on appropriately.</li> </ul>
<b>3. Works collaboratively to</b>	<ul style="list-style-type: none"> <li>Acts as a nursing resource across clinical settings and disciplines, sharing clinical expertise both formally and informally</li> <li>Creates opportunities within the clinical setting to share clinical expertise through teaching and coaching of staff</li> </ul>

Key accountabilities	Deliverables / Outcomes
ensure safe and effective care delivery	<ul style="list-style-type: none"> <li>Provides clinical expertise/ guidance in the assessing, planning and management of complex patients</li> <li>Effectively communicates and coordinates the plan of care with the multidisciplinary team to ensure a seamless transition between services, including primary and secondary care</li> <li>Evaluates the effectiveness of clinical interventions and collaboratively facilitates modification of regimes accordingly</li> <li>Facilitates the communication of consistent and realistic information to patients and families</li> <li>Facilitates opportunities for nursing and medical staff to participate and collaborate in patient care discussion.</li> </ul>
4. Provides effective nursing leadership	<ul style="list-style-type: none"> <li>Role models and applies the principles of Te Tiriti O Waitangi in nursing practice</li> <li>Champions equity and diversity in the workplace</li> <li>Visible and accessible to direct care nurses</li> <li>Leads practice innovation and initiative</li> <li>Leads and influences practice standard to reflect current nursing knowledge, research and best practice</li> <li>Coaches and role models expert clinical skills and professional nursing practice (teamwork, behaviour attitudes and conduct)</li> <li>Incorporates an awareness of broader health policies on provision of care delivery within the district</li> <li>Provides a nursing perspective in organisation and planning at a service level contributing to strategic direction of Service and Speciality</li> <li>Responds with constructive strategies to meet new challenges and initiates/ adopts change early</li> <li>Contributes to shared governance of nursing through engagement in relevant meetings, committees, and working parties and/or similar</li> <li>Engages with Care Capacity Demand Management (CCDM)</li> <li>Networks with team members from a wide range of clinical disciplines, to ensure timely and effective clinical management</li> <li>Fosters and participates in peer education, peer review processes, case review and reflective practice</li> <li>Actively involved in local and national reviews of guidelines</li> </ul>
5. Enhances inter-professional healthcare and provision of quality services	<ul style="list-style-type: none"> <li>Effectively communicates with all member of the multidisciplinary team on the management of patients to develop and coordinate a plan of care</li> <li>In collaboration with the services, identifies and proposes quality improvement initiatives using data-driven decision-making and effective change management processes</li> <li>Collates and maintains patient data for analysis, audit and reporting</li> <li>Actively seeks and incorporates feedback, to improve quality of care delivered, through presenting and participating in patient review</li> <li>Evaluates nursing practice against current standards of best practice</li> <li>Monitors and acts upon nurse sensitive quality indicators</li> <li>Contributes as a clinical expert in the investigation, critical assessment and management of any adverse/reportable events</li> </ul>

Key accountabilities	Deliverables / Outcomes
	<ul style="list-style-type: none"> <li>▪ Coordinates the development of evidence-based policies, procedures, documentation tools and information resources to enhance patient outcomes</li> <li>▪ Actively involved in long term on-going case and peer reviews</li> <li>▪ Attends appropriate educational meetings including clinical reviews</li> <li>▪ Participates in required mandatory training for clinical staff</li> </ul>
<b>6 Advances nursing and practice through research a scholarship</b>	<ul style="list-style-type: none"> <li>▪ Maintains required clinical competencies and technical expertise and as applicable expanded practice and national credentialing</li> <li>▪ Reviews research, literature and practice trends to inform practice and ensure currency</li> <li>▪ Proactive in identifying own professional development needs and negotiating appropriate resources including post graduate courses</li> <li>▪ Identifies researchable practice issues and engages support in undertaking research, audit and/or internal validation studies</li> <li>▪ Promotes the specialty and/or service from a nursing perspective through presentation and /or publication</li> <li>▪ Participates in local/national professional nursing or specialty groups</li> <li>▪ Uses professional nursing/specialty organisation membership to benefit the practice environment/ nursing service</li> </ul>
<b>7. Proactively manages risk and Safety</b>	<ul style="list-style-type: none"> <li>▪ Ensure practice meets health and safety at work legislation and compliance with Health and Safety policy and procedures</li> <li>▪ Actively supporting all health and safety initiatives and contributes to a safety culture for patients whānau and staff</li> <li>▪ Maintain a proactive culture of Health and Safety supported by systems</li> <li>▪ Actively support and ensure compliance with Health and Safety policy and procedures; ensuring staff also support and comply.</li> <li>▪ Identifies and reports clinical risk factors as they pertain to the clinical areas they work within and manages these proactively</li> <li>▪ As clinical expert contribute to reviews incidents/events/complaints as required to minimise risk and use findings to improve practice</li> <li>▪ Maintains professional development to support role competencies and credentialing when required for procedures e.g. expanded practice, colposcopy etc.</li> </ul>

## Key Relationships and Authorities

---



## Capability Profile

Solid performance in the role requires demonstration of the following competencies that provide a framework for selection and development.

Competency	Behaviours
<b>Equity</b>	<ul style="list-style-type: none"> <li>• Commits to helping all of our people to achieve equitable health outcomes</li> <li>• Demonstrates critical consciousness and on-going self-reflection and self-awareness in terms of the impact of their own culture on interactions and service delivery</li> <li>• Supports the dismantling of policies, procedures and practices that cause inequity</li> <li>• Supports Māori-led responses</li> <li>• Supports Pacific-led responses</li> <li>• Supports Disability-focused responses</li> </ul>
<b>Commitment to Kawa Whakaruruhau</b>	<ul style="list-style-type: none"> <li>• Demonstrates understanding and application of the principles of Te Tiriti O Waitangi   Treaty of Waitangi to nursing practice;</li> <li>• Works towards achieving equitable health outcomes for Māori;</li> <li>• Supports tangata whenua/mana whenua led change to deliver mana motuhake in the design, delivery and monitoring of health care;</li> <li>• Supports Māori oversight and ownership of decision making processes necessary to achieve Māori health equity;</li> <li>• Support the expression of hauora Māori models of care and mātauranga Māori</li> </ul>
<b>Dealing with Ambiguity</b>	<ul style="list-style-type: none"> <li>• Can effectively cope with change</li> <li>• Is adaptable and flexible</li> <li>• Can decide and act without having the total picture</li> <li>• Can comfortably manage risk and uncertainty</li> </ul>
<b>Decision Quality</b>	<ul style="list-style-type: none"> <li>• Makes good decisions based upon a mixture of analysis, wisdom, experience and judgement</li> <li>• Most of his/her solutions and suggestions turn out to be correct and accurate when judged over time</li> <li>• Sought out by others for advice and solutions</li> </ul>
<b>Directing Others</b>	<ul style="list-style-type: none"> <li>• Is good at establishing clear directions</li> <li>• Sets stretching objectives</li> <li>• Distributes the workload appropriately</li> <li>• Lays out work in a well-planned and organized manner</li> <li>• Maintains two-way dialogue with others on work and results</li> <li>• Brings out the best in people</li> <li>• Is a clear communicator</li> </ul>
<b>Process Management</b>	<ul style="list-style-type: none"> <li>• Good at figuring out the processes necessary to get things done</li> <li>• Knows how to organize people and activities</li> <li>• Understands how to separate and combine tasks into efficient work flow</li> <li>• Knows what to measure and how to measure it</li> <li>• Can simplify complex processes</li> <li>• Gets more out of fewer resources</li> </ul>

Competency	Behaviours
<b>Interpersonal Savvy</b>	<ul style="list-style-type: none"> <li>• Relates well to all kinds of people – up, down, and sideways, inside and outside the organisation</li> <li>• Builds appropriate rapport;</li> <li>• Builds constructive and effective relationships;</li> <li>• Uses diplomacy and tact;</li> <li>• Can diffuse even high-tension situations comfortably</li> </ul>
<b>Quality and Innovation</b>	<ul style="list-style-type: none"> <li>• Provides quality service to those who rely on one's work</li> <li>• Looks for ways to improve work processes - suggests new ideas and approaches</li> <li>• Explores and trials ideas and suggestions for improvement made by others</li> <li>• Shows commitment to continuous learning and performance development</li> </ul>

## Experience and Capability

---

Essential qualifications, skills and experience

- **Knowledge, Skills and Experience:**
  - Clinical expertise and experience aligning with Inpatient Rehabilitation
  - Excellent communication, interpersonal, facilitation and coaching skills
  - Experience in practice development and quality improvement strategies
  - Comprehensive knowledge informs understanding the NZ Health System including equity issues, professional leadership and emerging issues for the nursing profession
- **Essential Professional Qualifications / Accreditations / Registrations:**
  - Expert level in Professional Development Recognition Programme (PDRP) and committed to maintain Expert/Senior (CC) or Expert (HV) PDRP
  - Clinical Postgraduate Diploma is the required qualification however there is support to complete a Masters qualification. The prerequisite postgraduate clinical courses to undertake a RN prescribing practicum for NCNZ authorisation in RN prescribing in primary health and specialty teams, provide essential clinical knowledge for the CNS role. Note: Service and nursing leadership approval is required to undertake the RN prescribing practicum.
  - Full NZ Driver's licence as the role works between Wellington and Kenepuru campuses
- **Someone well-suited to the role will place a high value on the following:**
  - Commitment to Te Tiriti o Waitangi
  - Living the District values
  - An enthusiasm and passion for ongoing nursing practice development
  - A strong patient care focus with strengths in sharing that information
  - High quality care for the patient and whānau with a strong equity focus
  - Ensuring that they follow through on their work to deliver on identified outcomes.

**Ma tini, ma mano, ka rapa te whai  
By joining together we will succeed**