

Position Description

Position	Administrator Coordinator
Team / Service	Forensic Community Team, Central Region Forensics & Rehabilitation Inpatient Services
Directorate	MHAIDS Service – Mental Health, Addiction and Intellectual Disability
District	Capital, Coast, Hutt Valley & Wairarapa districts
Responsible to	Team Leader
Children's Act 2014	This position is classified as a children's worker, requiring a safety check including police vetting before commencing and every three years
Location	This position is expected to work from Palmerston North Forensic office

Health NZ - Te Whatu Ora

The Health System in Aotearoa is entering a period of transformation as we implement the Pae Ora/Healthy Futures vision of a reformed system where people live longer in good health, have improved quality of life, and there is equity between all groups.

We want to build a healthcare system that works collectively and cohesively around a shared set of values and a culture that enables everyone to bring their best to work and feel proud when they go home to their whānau, friends and community. The reforms are expected to achieve five system shifts. These are:

1. The health system will reinforce Te Tiriti principles and obligations
2. All people will be able to access a comprehensive range of support in their local communities to help them stay well
3. Everyone will have equal access to high quality emergency and specialist care when they need it
4. Digital services will provide more people the care they need in their homes and communities
5. Health and care workers will be valued and well-trained for the future health system

Context

Capital, Coast & Hutt Valley district provides hospital and health services in primary, secondary and tertiary healthcare to a total population base of approximately 445,000 citizens.

We are accountable for meeting the needs of and improving health outcomes for all the constituent populations of our district, and the region more broadly. Together we:

- provide secondary and tertiary, medical, surgery and mental health and intellectual disability hospital services alongside community based health care
- fund local health providers and work collaboratively with the community to create and support multiple health education initiatives and projects within the region
- deliver health services directly as well as contracting external providers
- provide local, sub-regional, regional and national health services as well as community-based health, rehabilitation and support services.

The majority of the district's population live in Wellington and Lower Hutt. The Māori and Pacific populations of Lower Hutt and Wellington are proportionally similar, with the largest Pacific population in the region in Porirua. Kapiti and Upper Hutt have similar numbers of Māori and Pacific people. Most people are enrolled with a GP near their place of residence, so the increasing focus on community-based healthcare is expected to lead to better health outcomes for these population groups. Hutt Hospital provides secondary and some tertiary, medical and surgical hospital services alongside community based health care from its main facility in Lower Hutt City. In addition to funding local health providers and working collaboratively with the community to create and support multiple health education initiatives and projects, Hutt Hospital is the centre for five tertiary regional and sub-regional services - Plastics, Maxillofacial and Burns Services; Rheumatology; Dental Services; Regional Public Health; and Regional (Breast and Cervical) Screening Services.

Wellington Regional Hospital in Newtown is the region's main tertiary hospital with services such as complex specialist and acute procedures, intensive care, cardiac surgery, cancer care, neurosurgery and renal care. The hospital is the key tertiary referral centre for the lower half of the North Island and the upper half of the South Island.

Te Wao Nui, the Child Health Service for the Wellington Region and Central New Zealand based in the new purpose built children's hospital on the Wellington Regional Hospital campus, supports babies to adolescents with medical conditions or who may need paediatric surgery. It provides both hospital and outpatient services.

Women's Health Services provide tertiary level maternity care in Wellington and Hutt Regional Hospitals and a Primary Birthing Unit in Kenepuru. The provision of services from Women's Health encompass community-based primary LMC care and breastfeeding support, and tertiary level obstetrics, gynaecology, and other specialist services.

Kenepuru Community Hospital and Kapiti Health Centre provide secondary and community services based in Porirua and the Kapiti Coast

MHAIDS is the mental health, addiction and intellectual disability service for the Wairarapa District and Capital, Coast & Hutt Valley District, with multiple specialist facilities. The service holds national contracts some of which are delivered in other district localities. Ratonga Rua-o-Porirua is our forensic, rehabilitation and intellectual disability inpatient unit.

Te Tiriti o Waitangi and Māori Health Outcomes

Māori are the indigenous peoples of Aotearoa. We have particular responsibilities and accountabilities through this founding document of Aotearoa. We value Te Tiriti and have adopted the following four goals, developed by the Ministry of Health, each expressed in terms of mana and the principles of:

- Mana whakahaere** Effective and appropriate stewardship or kaitiakitanga over the health and disability system. This goes beyond the management of assets or resources.
- Mana motuhake** Enabling the right for Māori to be Māori (Māori self-determination); to exercise their authority over their lives, and to live on Māori terms and according to Māori philosophies, values and practices including tikanga Māori.
- Mana tāngata** Achieving equity in health and disability outcomes for Māori across the life course and contributing to Māori wellness.
- Mana Māori** Enabling Ritenga Māori (Māori customary rituals) which are framed by Te Aō Māori (the Māori world), enacted through tikanga Māori (Māori philosophy & customary practices) and encapsulated within mātauranga Māori (Māori knowledge).

We will target, plan and drive our health services to create equity of health care for Māori to attain good health and well-being, while developing partnerships with the wider social sector to support whole of system change.

Te Mauri o Rongo

Te Mauri o Rongo recognises our connection to this work, to each other, to the people we serve and to our whakapapa. It speaks to specific behaviours that we will expect from each other guided by the pou of Te Mauri o Rongo:

Wairuatanga

Working with heart, the strong sense of purpose and commitment to service that health workers bring to their mahi.

Rangatiratanga

As organisations we support our people to lead. We know our people; we will grow those around us and be accountable with them in contributing to Pae Ora for all.

Whanaungatanga

We are a team, and together a team of teams. Regardless of our role, we work together for a common purpose. We look out for each other and keep each other safe. “Whiria te tangāta” – we will weave our people together.

Te Korowai Āhuru

A cloak which seeks to provide safety and comfort to the workforce.

District Responsibility

The district leadership have collective accountability for leading with integrity and transparency a progressive, high performing organisation, aimed at improving the health and independence of the community we serve and achieving equitable outcomes for all. The leadership team are responsible for achieving this aim, aligned with our Region, within the available resources, through a skilled, empowered, motivated and supported workforce in line with government and HNZ policy.

Te Whatu Ora is committed to Te Tiriti o Waitangi principles of Tino Rangatiratanga, Partnership, Equity, Active Protection and Options by ensuring that guidelines for employment policies and procedures are implemented in a way that recognises Māori cultural practices.

We are committed to supporting the principles of Equal Employment Opportunities (EEO) through the provision and practice of equal access, consideration, and encouragement in the areas of employment, training, career development and promotion for all its employees.

Service Perspective

The hospital and health services of the Districts provide a range of services, one such group of services includes Mental Health, Addiction and Intellectual Disability (MHAID) Service. The Service has over 1400 employees and annual revenue of \$135m.

MHAIDS spans two districts - Wairarapa, Capital, Coast and Hutt Valley and includes local, regional, and national services. The local MHAID services are provided from multiple sites within the sub-region – greater Wellington, Hutt Valley and Wairarapa. Te Korowai Whāriki services include regional forensic and rehabilitation services covering the Central region while the intellectual disability services extend the length and breadth of the country from six bases located in Whangarei, Auckland, Cambridge, Wellington, Christchurch, and Dunedin.

The core business of the Service is the provision of quality specialist services, integrated with primary and secondary providers in the communities we serve.

The Service is committed to the underlying principles of:

- Te Tiriti o Waitangi as the founding document of Aotearoa/New Zealand
- He Ara Oranga
- Mental Wellbeing Long Term Pathway
- Whakamaua – Māori Health Action Plan 2020-2025
- The New Zealand Disability Strategy: Making a World of Difference – Whakanui Oranga
- Intellectual Disability High and Complex Framework

The Service has access to business support services including People and Culture, and Finance. In addition, management and delivery of clinical services across the Service is underpinned by consultation, advice, and support from a range of cultural, consumer, and family advisors, and business, quality and organisational development personnel.

Team/Sector Perspective

The regional arm includes the Central Regional Forensic Mental Health Service, Youth Forensic Service and Rehabilitation and Extended Care inpatient Service. This position is located in the regional arm of Te Korowai-Whāriki includes the Central Regional Forensic Mental Health Service which operates at the interface between Mental Health Services and the Justice System and works within the following settings – prisons, courts, community, and inpatient.

The Service offers assessment and rehabilitation services to:

- Defendants charged with criminal offences
- Offenders who have psychiatric illness

The Central Regional Forensic Adult Mental Health Service covers Wellington, Manawatu-Wanganui, Tararua, Wairarapa, Hawke's Bay and Gisborne districts. The forensic mental health services operate between the criminal justice system and general mental health services.

The forensic community teams are multidisciplinary based with their principal role as providing mental health services to all prisons (there are 6 prisons and a third of New Zealand's total prison population in the Central Region) and adult courts (there are 17 court systems) in the region. We have forensic adult community teams based near the courts in the main cities in each district and near the five prisons in the central region of the North Island. These teams also follow up in the community certain tangata whaiora/consumers that transition from the inpatient units.

The Central Regional Forensic Service also is involved with (18) Youth Court providing a Court Liaison Service and completing specialist psychological or psychiatric assessments ordered by the Court through Children Young Persons & Family Act, 1989 (Section 333).

The Service also provides consultation and liaison to General Mental Health Services, including provision of cultural support with formal reviews and a network of community services based at Wellington, Wairarapa, Manawatu, Wanganui, Hawke's Bay and Gisborne/East Coast.

Purpose of the role

To ensure the best quality of administrative services are provided to the manager, team and clinical staff. The position of Administration Coordinator reports directly to the team leader and is responsible for administering systems, policies and procedures to enhance the performance and day-to-day operational requirements of the Service.

The Administration Co-Ordinator is responsible for the effective and efficient provision of all administrative services to a high quality. The Administration Co-Ordinator ensures administrative support is provided to all health professionals in their operational area and information required by other MHAID services is timely and accurate.

Key Accountabilities

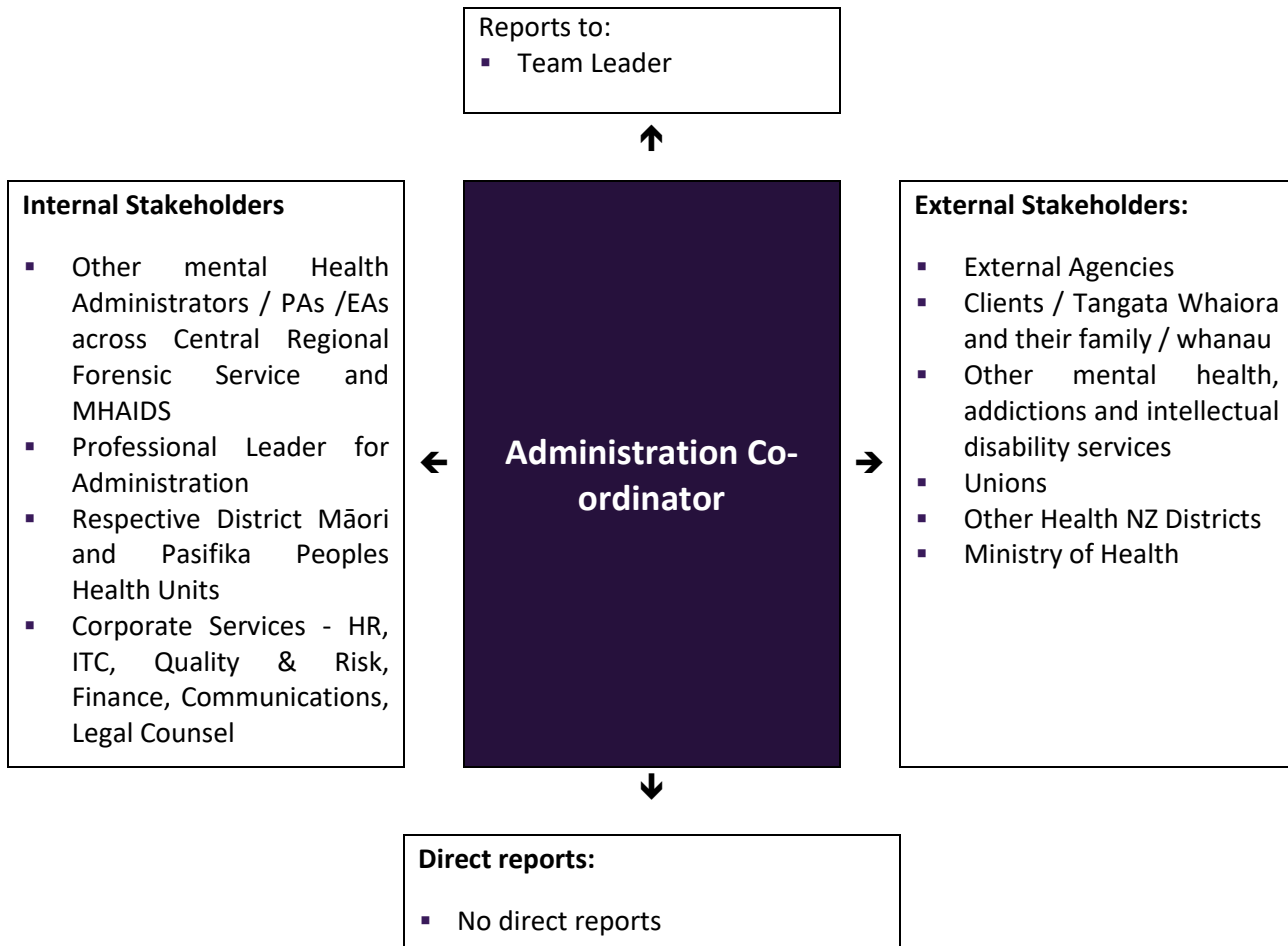
The following role accountabilities may evolve with organisational change and there may be additional duties, relevant to this position that will be required to be performed from time to time.

Key accountabilities	Deliverable/Outcomes
1. Establish and maintain systems that offer an efficient and timely service to the Multi-disciplinary Team	<ul style="list-style-type: none"> ▪ Oversee administration personnel, offering support and direction as required and ensuring staff are up-skilled in all facets of administration; ▪ Oversee all administration activities, delegating tasks as appropriate; ▪ Is responsible for output and quality of administrative work; ▪ Ensures all administration tasks are carried out in a timely manner; ▪ Regularly updates Team Leader regarding team issues; ▪ Monitors statistical information; ▪ Maintains booking system for cars; ▪ Ensures supplies are maintained.
2. All equipment, vehicles and buildings are maintained and updated.	<ul style="list-style-type: none"> ▪ Ensures building maintenance is carried out; ▪ Ensures cars are maintained; ▪ Ensures all team base equipment is maintained and updated as requested; ▪ Liaise with PA for sector regarding Capex purchases as requested by the manager.
3. Maintain all legal requirements.	<ul style="list-style-type: none"> ▪ Oversees the administration of the Mental Health Act in conjunction with the Mental Health Act Administrator of Forensic and MHAIDS Director of Area Mental Health Services (DAMHS) Is familiar with and can carry out all legal aspects of the Mental Health Act; ▪ Is familiar with the Criminal Procedure (Mentally Impaired Persons') Act, Intellectual Disability (Compulsory Care & Rehabilitation) Act and Children Young Persons & Their Families Act; ▪ Is familiar with the Privacy Act and Health & Information Act. ▪ Ensures Forensic community Client/Tangata Whaiora legal status paper work is kept update.
4. Information systems operate responsively and efficiently.	<ul style="list-style-type: none"> ▪ Schedules the court report appointments with Forensic community client/Tangata Whaiora ▪ Records DNA ▪ Ensure data for court report ordered in the Wellington region courts are accurately entered. ▪ Ensure data is accurately entered, maintained and retrieved in a timely manner; ▪ Maintain integrity of all information systems by ensuring that only authorised staff obtain access.
5. All information relating to clients/Tangata Whaiora is filed promptly and kept up to date, and all requests for files are actioned in a timely manner.	<ul style="list-style-type: none"> ▪ Ensure Forensic community client/Tangata Whaiora files are maintained; ▪ Ensure all file requests and discharges are actioned in a timely manner; ▪ Ensure files are kept securely in accordance with Primary File protocol.

<p>6. Co-ordination of workloads</p>	<ul style="list-style-type: none"> ▪ Support the administration team; ▪ Carry out any new procedures as required by the Service; ▪ Show flexibility and willingness to relieve other administrative staff who may be on annual, sick leave or overload situations, within the team and the wider service.
<p>7. Team Work</p>	<ul style="list-style-type: none"> ▪ Support the managers with administration and Human Resource processes as requested; ▪ Meet regularly with administration team; ▪ Meet as required with the PA for your sector, or the professional leader to discuss administrative issues; ▪ Attends monthly meetings with the administration coordinators as well as additional meetings as required.
<p>8. Professional Development</p>	<ul style="list-style-type: none"> ▪ Development activity as agreed in performance development plan, developed through performance appraisal; ▪ Attend regular supervision sessions, arranged through Professional Leader.
<p>9. Actively contributes to Continuous Quality Improvement activities within the service</p>	<ul style="list-style-type: none"> ▪ Identifies improvement opportunities and notifies the manager of these; ▪ Participates in the service's quality improvement activities; ▪ All controlled documents (policies, procedures etc) are appropriately formatted for the manager's sign off; ▪ Provides good client/tangata whaiora service and is responsive to client/tangata whaiora requests or complaints; ▪ Maintain policy and procedure manuals.
<p>10. Actively contributes to risk minimisation activities within the service.</p>	<ul style="list-style-type: none"> ▪ Identifies risk and notifies the manager of these; ▪ Participates in the service's risk minimisation activities; ▪ Complies with policies and procedures including (but not limited to) CCHV Reportable Events Policy; ▪ Participates in audits as requested; ▪ Evidence of contribution to risk minimisation.
<p>11. Complies with responsibilities under the Health & Safety in Employment Act 1992</p>	<ul style="list-style-type: none"> ▪ Read and understood the Health & Safety policy and procedures; ▪ Actively support and comply with Health & Safety policy and procedures; ▪ Evidence of support and compliance with health and safety policy and procedures including use of protective clothing and equipment as required, active participation in hazard management and identification process, and proactive reporting and remedying of any unsafe work condition, accident or injury.

A temporary change of location to another base may be required in order to meet client and service requirements.

Key Relationships & Authorities



Capability Profile

Solid performance in the role requires demonstration of the following competencies. These competencies provide a framework for selection and development.

Competency	Behaviours
Strategic Agility	<ul style="list-style-type: none"> ▪ Sees ahead clearly; ▪ Can anticipate future consequences and trends accurately; ▪ Has broad knowledge and perspective; ▪ Is future oriented; ▪ Can articulately paint credible pictures and visions of possibilities and likelihoods; ▪ Can create competitive and breakthrough strategies and plans.
Integrity and Trust	<ul style="list-style-type: none"> ▪ Is widely trusted; ▪ Is seen as a direct, truthful individual; ▪ Can present the unvarnished truth in an appropriate and helpful manner; ▪ Keeps confidences and Admits mistakes; ▪ Doesn't misrepresent her/himself for personal gain.
Dealing with Ambiguity	<ul style="list-style-type: none"> ▪ Can effectively cope with change; ▪ Can shift gears comfortably; ▪ Can decide and act without having the total picture; ▪ Isn't upset when things are up in the air; ▪ Doesn't have to finish things before moving on; ▪ Can comfortably handle risk and uncertainty.
Composure	<ul style="list-style-type: none"> ▪ Is cool under pressure; ▪ Does not become defensive or irritated when times are tough; ▪ Is considered mature; ▪ Can be counted on to hold things together during tough times; ▪ Can handle stress; ▪ Is not knocked off balance by the unexpected; ▪ Doesn't show frustration when resisted or blocked; ▪ Is a settling influence in a crisis
Planning	<ul style="list-style-type: none"> ▪ Accurately scopes out length and difficulty of tasks and projects; ▪ Sets objectives and goals; ▪ Breaks down work into the process steps; ▪ Develops schedules and task/people assignments.
Organising	<ul style="list-style-type: none"> ▪ Can marshal resources (people, funding, material, support) to get things done; ▪ Can orchestrate multiple activities at once to accomplish a goal; ▪ Uses resources effectively and efficiently; ▪ Arranges information and files in a useful manner.
Teamwork	<ul style="list-style-type: none"> ▪ Develops constructive working relationships with other team members; ▪ Has a friendly manner and a positive sense of humour; ▪ Works cooperatively - willingly sharing knowledge and expertise with colleagues; ▪ Shows flexibility - is willing to change work arrangements or take on extra tasks in the short term to help the service or team meet its commitments; ▪ Supports in word and action decisions that have been made by the team; ▪ Shows an understanding of how one's own role directly or indirectly supports the health and independence of the community.

Competency	Behaviours
Communication	<ul style="list-style-type: none"> ▪ Practises active and attentive listening; ▪ Explains information and gives instructions in clear and simple terms; ▪ Willingly answers questions and concerns raised by others; ▪ Responds in a non-defensive way when asked about errors or oversights, or when own position is challenged; ▪ Is confident and appropriately assertive in dealing with others; ▪ Deals effectively with conflict.
Interpersonal Savvy	<ul style="list-style-type: none"> ▪ Relates well to all kinds of people – up, down, and sideways, inside and outside the organisation; ▪ Builds appropriate rapport; ▪ Builds constructive and effective relationships; ▪ Uses diplomacy and tact; ▪ Can diffuse even high-tension situations comfortably.
Cultural Skills	<ul style="list-style-type: none"> ▪ Words and actions show an understanding of the implications for one’s work of Te Tiriti o Waitangi principles and Maori perspective as Tangata Whenua; ▪ Values and celebrates diversity - showing respect for other cultures and people's different needs and ways of living; ▪ Shows an awareness of gaps in, and a desire to increase, cultural knowledge and inter-cultural practice relevant to one’s work; ▪ Accesses resources to make sure culturally appropriate and language appropriate services are provided; ▪ Draws on a client's own cultural resources and support frameworks.
Customer Focus	<ul style="list-style-type: none"> ▪ Is dedicated to meeting the expectations and requirements of internal and external customers; ▪ Gets first-hand customer information and uses it for improvements in products and services; ▪ Acts with customers in mind; ▪ Establishes and maintains effective relationships with customers and gains their trust and respect.
Partnership with Maori	<ul style="list-style-type: none"> ▪ Understands the principles of Te Tiriti o Waitangi and how these apply within the context of health service provision; ▪ Applies the notion of partnership and participation with Maori within the workplace and the wider community; ▪ Promotes and participates in targeting Maori health initiatives by which Maori health gains can be achieved; ▪ Implements strategies that are responsive to the health needs of Maori.
Taking Responsibility	<ul style="list-style-type: none"> ▪ Is results focussed and committed to making a difference; ▪ Plans and organises work, allocating time to priority issues, meeting deadlines and coping with the unexpected; ▪ Adjusts work style and approach to fit in with requirements; ▪ Perseveres with tasks and achieves objectives despite obstacles; ▪ Is reliable - does what one says one will; ▪ Consistently performs tasks correctly - following set procedures and protocols.

Experience and Capability

Essential qualifications, skills and experience

A. Knowledge, Skills & Experience:

- Experience in developing administrative procedures;
- Working knowledge of computer programs including Word, Excel and PowerPoint;
- Commitment to customer services;
- Well-developed oral and written communication skills;
- Proven ability to prioritise workload and deal with multiple tasks in pressure situations.

B. Someone well-suited to the role will place a high value on the following:

- Effective working relationships with staff and management
- Following process (also discerning when a situation may require a slightly different process within policy and Procedural confines)
- Accuracy and confidentiality
- Integrity, trust, highly organised and effective time management

C. Other:

- Demonstrate initiative
- People-centred problem-solving capability
- Confidence to prioritise and focus
- Have a current drivers licence

Ma tini, ma mano, ka rapa te whai
By joining together we will succeed

Te Whatu Ora is committed to Te Tiriti o Waitangi principles of partnership, participation, equity and protection by ensuring that guidelines for employment policies and procedures are implemented in a way that recognises Māori cultural practices.

We are committed to supporting the principles of Equal Employment Opportunities (EEO) through the provision and practice of equal access, consideration, and encouragement in the areas of employment, training, career development and promotion for all its employees.