

## Position Description

---

<b>Position</b>	<b>Health Care Assistant</b>
<b>Team / Service</b>	Outpatients Department, Kenepuru and Wellington
<b>Directorate</b>	Surgical, Womans and Children
<b>District</b>	Capital, Coast
<b>Responsible to</b>	Charge Nurse Manager
<b>Children's Act 2014</b>	<p>This position is classified as a children's worker, requiring a safety check including police vetting before commencing and every three years</p> <p>This position is not children's worker, requiring a safety check with Ministry of Justice vetting before commencing</p>
<b>Location</b>	This position is expected to work across both Wellington and Kenepuru campuses. The position also covers the HCA duties that sit with the clinical measurement Unit (CMU) and Te Wai Nui (Childrens hospital). Start times range from 0700, 0800 and 0830, and finish times 1530, 1600 and 1700.

## Te Whatu Ora

---

The Health System in Aotearoa is entering a period of transformation as we implement the Pae Ora/Healthy Futures vision of a reformed system where people live longer in good health, have improved quality of life, and there is equity between all groups.

We want to build a healthcare system that works collectively and cohesively around a shared set of values and a culture that enables everyone to bring their best to work and feel proud when they go home to their whānau, friends and community. The reforms are expected to achieve five system shifts. These are:

1. The health system will reinforce Te Tiriti principles and obligations
2. All people will be able to access a comprehensive range of support in their local communities to help them stay well
3. Everyone will have equal access to high quality emergency and specialist care when they need it
4. Digital services will provide more people the care they need in their homes and communities
5. Health and care workers will be valued and well-trained for the future health system

## Context

---

Capital, Coast & Hutt Valley district provides hospital and health services in primary, secondary and tertiary healthcare to a total population base of approximately 445,000 citizens.

We are accountable for meeting the needs of and improving health outcomes for all the constituent populations of our district, and the region more broadly. Together we:

- provide secondary and tertiary, medical and surgical hospital services alongside community based health care
- fund local health providers and work collaboratively with the community to create and support multiple health education initiatives and projects within the region
- deliver health services directly as well as contracting external providers
- provide local, sub-regional, regional and national health services as well as community-based health, rehabilitation and support services.

The majority of the district's population live in Wellington and Lower Hutt. The Māori and Pacific populations of Lower Hutt and Wellington are proportionally similar, with the largest Pacific population in the region in Porirua. Kapiti and Upper Hutt have similar numbers of Māori and Pacific people. Most people are enrolled with a GP near their place of residence, so the increasing focus on community-based healthcare is expected to lead to better health outcomes for these population groups. Hutt Hospital provides secondary and some tertiary, medical and surgical hospital services alongside community based health care from its main facility in Lower Hutt City. In addition to funding local health providers and working collaboratively with the community to create and support multiple health education initiatives and projects, Hutt Hospital is the centre for five tertiary regional and sub-regional services - Plastics, Maxillofacial and Burns Services; Rheumatology; Dental Services; Regional Public Health; and Regional (Breast and Cervical) Screening Services.

Wellington Regional Hospital in Newtown is the region's main tertiary hospital with services such as complex specialist and acute procedures, intensive care, cardiac surgery, cancer care, neurosurgery and renal care. The hospital is the key tertiary referral centre for the lower half of the North Island and the upper half of the South Island.

Kenepuru Community Hospital and Kapiti Health Centre provide secondary and community services based in Porirua and the Kapiti Coast

MHAIDS is the mental health, addictions and intellectual disability service for the Wairarapa District and Capital, Coast & Hutt Valley District, with multiple specialist facilities. Ratonga Rua-o- Porirua is our forensic, rehabilitation and intellectual disability inpatient unit.

## Te Tiriti o Waitangi and Māori Health Outcomes

---

Māori are the indigenous peoples of Aotearoa. We have particular responsibilities and accountabilities through this founding document of Aotearoa. We value Te Tiriti and have adopted the following four goals, developed by the Ministry of Health, each expressed in terms of mana and the principles of:

**Mana whakahaere** Effective and appropriate stewardship or kaitiakitanga over the health and disability system. This goes beyond the management of assets or resources.

**Mana motuhake** Enabling the right for Māori to be Māori (Māori self-determination); to exercise their authority over their lives, and to live on Māori terms and according to Māori philosophies, values and practices including tikanga Māori.

**Mana tāngata** Achieving equity in health and disability outcomes for Māori across the life course and contributing to Māori wellness.

**Mana Māori** Enabling Ritenga Māori (Māori customary rituals) which are framed by Te Aō Māori (the Māori world), enacted through tikanga Māori (Māori philosophy & customary practices) and encapsulated within mātauranga Māori (Māori knowledge).

We will target, plan and drive our health services to create equity of health care for Māori to attain good health and well-being, while developing partnerships with the wider social sector to support whole of system change.

## The Vision, Mission and Values from our District

---

We bring forward and join our values within our district. These will change as we become a team of teams within Te Whatu Ora.

### Hutt Valley

#### Vision

Whanau Ora ki te Awakairangi: Healthy people, healthy families and healthy communities are so interlinked that it is impossible to identify which one comes first and then leads to another.

#### Mission

Working together for health and wellbeing.

#### Ō mātou uara – Values

Mahi Pai 'Can do': Mahi Tahī in Partnership: Mahi Tahī Te Atawhai Tonu Always caring and Mahi Rangatira being our Best

### Capital and Coast

#### Vision

Keeping our community healthy and well

#### Mission

Together, Improve the Health and Independence of the People of the District

#### Value

Manaakitanga – Respect, caring, kindness  
Kotahitanga – Connection, unity, equity  
Rangatiratanga – Autonomy, integrity, excellence

## District Responsibility

---

The district leadership have collective accountability for leading with integrity and transparency a progressive, high performing organisation, aimed at improving the health and independence of the community we serve and achieving equitable outcomes for all. The leadership team are responsible for achieving this aim, aligned with our Region, within the available resources, through a skilled, empowered, motivated and supported workforce in line with government and HNZ policy.

## Team/Service Perspective

---

The Health Care Assistant (HCA) is part of the unregulated health workforce and therefore must always work under direction and/or delegation of a Registered Nurse (RN). The HCA role is task-specific and has defined boundaries.

The HCA is part of a collaborative health care team; they assist the RN to meet the patient/client needs when it is appropriate for the RN to delegate aspects of care to a trained unregulated healthcare role. The HCA contributes to the successful operation of the nursing team.

The RN may delegate aspects of the patient/client care activities to HCAs when the work does not require professional nursing knowledge, judgement and skill. The HCA must seek guidance and supervision when

needed. The HCA may also be allocated service activities or duties that contribute to the service function and delivery.

Usual hours of work are Monday – Friday, 8 hours per day between 0700 – 1530 and 0830-1700 hours. Specific training will be provided to ensure the HCA has appropriate skills according to the employer and service expectations.

The HCA gives and receives feedback on their performance in an annual performance appraisal with the manager.

Recognition of advancing level of skill /knowledge is incorporated into the NZ Nurses’ Organisation (NZNO) Multi-Employer Collective Agreement (MECA). There are two levels - known as 'Merit Steps'. Steps One and Two have a monetary allowance paid on successful completion of a pre-determined set of criteria. HCAs may apply for Merit Step One or Two depending on their level of skill / knowledge. Merit Step criteria are included in the next section of this Role Description, where HCA accountabilities are described in five categories.

The Wellington and Kenepuru Outpatients Service provides a facility to support the delivery of a range of specialist outpatient clinics at Wellington and Kenepuru hospitals. These are specialist consultant clinics with registrar support, allied health clinics, nurse-led clinics and technician clinics.

The service provides active management of clinics to maximise their utilisation and ensures that expert nursing and clerical resources are used efficiently to enhance the delivery of services to patients.

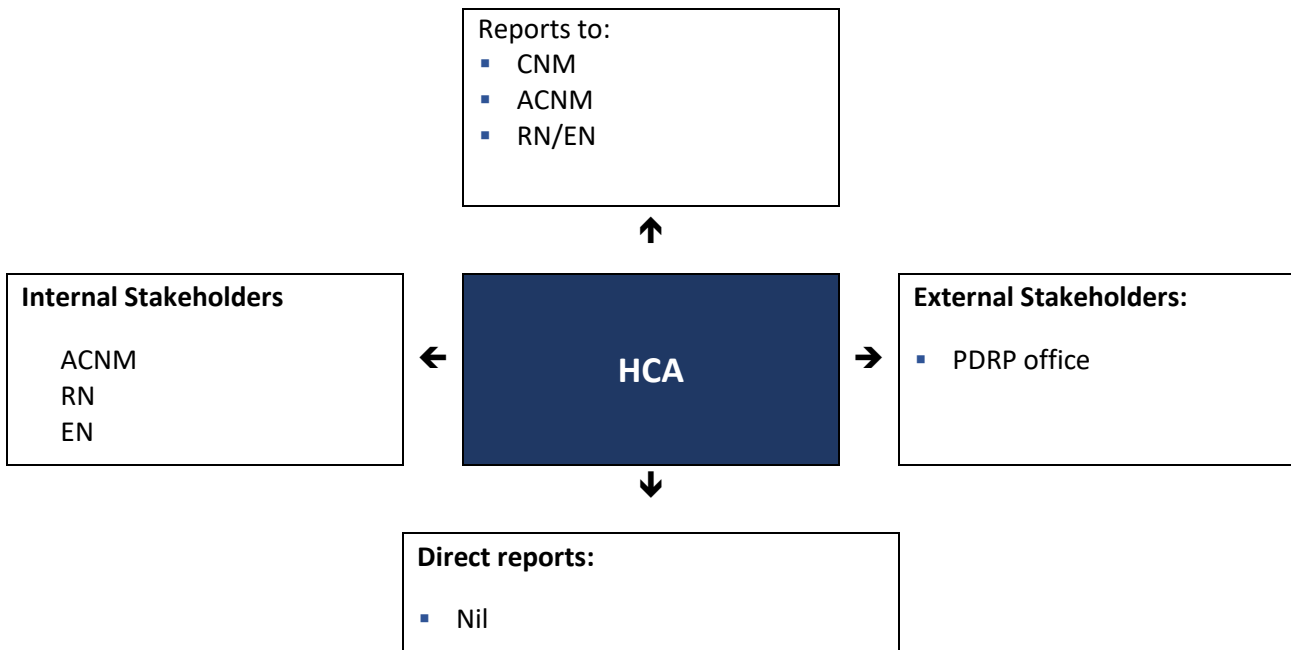
## Key Accountabilities

The following role accountabilities may evolve with organisational change and there may be additional duties, relevant to this position that will be required to be performed from time to time.

Key accountabilities	Deliverables / Outcomes
1. Technical outcomes / accountabilities	<ul style="list-style-type: none"> <li>▪ Relates well to all kinds of people – up, down, and sideways, inside and outside the organisation</li> <li>▪ Builds appropriate rapport</li> <li>▪ Builds constructive and effective relationships</li> <li>▪ Uses diplomacy and tact</li> <li>▪ Can diffuse even high-tension situations comfortably</li> </ul>
2. Leadership	<ul style="list-style-type: none"> <li>▪ Can marshal resources (people, funding, material, support) to get things done</li> <li>▪ Can orchestrate multiple activities at once to accomplish a goal</li> <li>▪ Uses resources effectively and efficiently</li> <li>▪ Arranges information and files in a useful manner</li> </ul>
3. Stakeholder engagement	<ul style="list-style-type: none"> <li>▪ Itemised</li> </ul>
4. Continuous improvement and innovation	<ul style="list-style-type: none"> <li>▪ Establish a culture of continuous improvement, ensuring linked and cohesive 2DHB view of the support services function that identifies opportunities and co-designs innovative solutions to meet the changing needs, from local customers through to district services or whole sector.</li> </ul>
5. Te Tiriti o Waitangi	<ul style="list-style-type: none"> <li>▪ Work in partnership with stakeholders to achieve our equity goals for Māori and ensure Te Tiriti o Waitangi obligations are adhered to</li> <li>▪ Equity outcomes are front and centre in goals, performance monitoring and plans for service and team performance</li> </ul>

Key accountabilities	Deliverables / Outcomes
	<ul style="list-style-type: none"> <li>▪ Cultural competence is grown across the team, supporting inclusion and partnership.</li> </ul>
6. Health & Safety	<ul style="list-style-type: none"> <li>▪ Ensure all Health &amp; Safety obligations under the legislation are applied and managed to and that a culture of safe practice is second nature</li> <li>▪ Actively support and ensure compliance with Health &amp; Safety policy and procedures; ensuring staff also support and comply.</li> <li>▪ Maintain a proactive culture of Health &amp; Safety supported by systems.</li> <li>▪ Ensure providers are aware of and have processes to comply with their health and safety responsibilities</li> </ul>

## Key Relationships & Authorities



## Capability Profile

Solid performance in the role requires demonstration of the following competencies. These competencies provide a framework for selection and development.

Competency	Behaviours
<b>Interpersonal Savvy</b>	<ul style="list-style-type: none"> <li>▪ Demonstrates strong interpersonal skills and relates effectively to people from diverse backgrounds.</li> <li>▪ Builds appropriate rapport</li> <li>▪ Builds constructive and effective relationships</li> <li>▪ Uses diplomacy and tact</li> </ul>
<b>Organising</b>	<ul style="list-style-type: none"> <li>▪ Can marshal resources (people, funding, material, support) to get things done</li> <li>▪ Can orchestrate multiple activities at once to accomplish a goal</li> <li>▪ Uses resources effectively and efficiently</li> <li>▪ Arranges information and files in a useful manner</li> </ul>
<b>Planning</b>	<ul style="list-style-type: none"> <li>▪ Accurately scopes out length and difficulty of tasks and projects</li> <li>▪ Sets objectives and goals</li> <li>▪ Breaks down work into the process steps</li> <li>▪ Develops schedules and task/people assignments</li> <li>▪ Anticipates and adjusts for problems and roadblocks</li> <li>▪ Measures performance against goals</li> <li>▪ Evaluates results</li> </ul>

Competency	Behaviours
<b>Decision Quality</b>	<ul style="list-style-type: none"> <li>▪ Makes good decisions (without considering how much time it takes) based upon a mixture of analysis, wisdom, experience, and judgement</li> <li>▪ Most of his/her solutions and suggestions turn out to be correct and accurate when judged over time</li> <li>▪ Sought out by others for advice and solutions</li> </ul>
<b>Problem Solving</b>	<ul style="list-style-type: none"> <li>▪ Uses rigorous logic and methods to solve difficult problems with effective solutions</li> <li>▪ Probes all fruitful sources for answers</li> <li>▪ Can see hidden problems'</li> <li>▪ Is excellent at honest analysis</li> <li>▪ Looks beyond the obvious and doesn't stop at the first answer</li> </ul>
<b>Quality &amp; Innovation</b>	<ul style="list-style-type: none"> <li>▪ Provides quality service to those who rely on one's work.</li> <li>▪ Looks for ways to improve work processes - suggests new ideas and approaches.</li> <li>▪ Explores and trials ideas and suggestions for improvement made by others.</li> <li>▪ Shows commitment to continuous learning and performance development.</li> </ul>
<b>Negotiating</b>	<ul style="list-style-type: none"> <li>▪ Can negotiate skilfully in tough situations with both internal and external groups;</li> <li>▪ Can settle differences with minimum noise;</li> <li>▪ Can win concessions without damaging relationships; ○</li> <li>▪ Gains trust quickly of other parties to the negotiations;</li> <li>▪ Has a good sense of timing</li> </ul>

## Experience and Capability

---

Essential qualifications, skills and experience

### A. Knowledge, Skills & Experience:

- Previous experience in HCA advantageous.
- Experience in FPIM and ordering tools resources, however full training will be given.
- Sound knowledge of ordering systems throughout the organisation
- Willingness to learn ordering skills

### B. Essential Professional Qualifications / Accreditations / Registrations:

- Level 4 Health Care worker certificate or equivalent
- On Merit steps or working towards merit steps

### C. Someone well-suited to the role will place a high value on the following:

- Attention to detail
- Awareness of the current health care system
- Excellent time management
- Ability to use the computer affectively
- Attention to detail.

**Ma tini, ma mano, ka rapa te whai**  
**By joining together we will succeed**

Te Whatu Ora is committed to Te Tiriti o Waitangi principles of partnership, participation, equity and protection by ensuring that guidelines for employment policies and procedures are implemented in a way that recognises Māori cultural practices.

We are committed to supporting the principles of Equal Employment Opportunities (EEO) through the provision and practice of equal access, consideration, and encouragement in the areas of employment, training, career development and promotion for all its employees.