

Position Description

Position	Registered/Enrolled Nurse
Team / Service	Outpatients Department
Directorate	Surgical Services, Woman's & Children
District	Capital, Coast & Hutt Valley
Responsible to	Charge Nurse Manager
Children's Act 2014	This position is classified as a children's worker, requiring a safety check including police vetting before commencing and every three years
Location	This position is expected to work across Wellington and Kenepuru hospitals

Te Whatu Ora

The Health System in Aotearoa is entering a period of transformation as we implement the Pae Ora/Healthy Futures vision of a reformed system where people live longer in good health, have improved quality of life, and there is equity between all groups.

We want to build a healthcare system that works collectively and cohesively around a shared set of values and a culture that enables everyone to bring their best to work and feel proud when they go home to their whānau, friends and community. The reforms are expected to achieve five system shifts. These are:

1. The health system will reinforce Te Tiriti principles and obligations
2. All people will be able to access a comprehensive range of support in their local communities to help them stay well
3. Everyone will have equal access to high quality emergency and specialist care when they need it
4. Digital services will provide more people the care they need in their homes and communities
5. Health and care workers will be valued and well-trained for the future health system

Context

Capital, Coast & Hutt Valley district provides hospital and health services in primary, secondary and tertiary healthcare to a total population base of approximately 445,000 citizens.

We are accountable for meeting the needs of and improving health outcomes for all the constituent populations of our district, and the region more broadly. Together we:

- provide secondary and tertiary, medical and surgical hospital services alongside community based health care
- fund local health providers and work collaboratively with the community to create and support multiple health education initiatives and projects within the region
- deliver health services directly as well as contracting external providers
- provide local, sub-regional, regional and national health services as well as community-based health, rehabilitation and support services.

The majority of the district's population live in Wellington and Lower Hutt. The Māori and Pacific populations of Lower Hutt and Wellington are proportionally similar, with the largest Pacific population in the region in Porirua. Kapiti and Upper Hutt have similar numbers of Māori and Pacific people. Most people are enrolled with a GP near their place of residence, so the increasing focus on community-based healthcare is expected to lead to better health outcomes for these population groups. Hutt Hospital provides secondary and some tertiary, medical and surgical hospital services alongside community based health care from its main facility in Lower Hutt City. In addition to funding local health providers and working collaboratively with the community to create and support multiple health education initiatives and projects, Hutt Hospital is the centre for five tertiary regional and sub-regional services - Plastics, Maxillofacial and Burns Services; Rheumatology; Dental Services; Regional Public Health; and Regional (Breast and Cervical) Screening Services.

Wellington Regional Hospital in Newtown is the region's main tertiary hospital with services such as complex specialist and acute procedures, intensive care, cardiac surgery, cancer care, neurosurgery and renal care. The hospital is the key tertiary referral centre for the lower half of the North Island and the upper half of the South Island.

Te Wao Nui, the Child Health Service for the Wellington Region and Central New Zealand based in the new purpose built children's hospital on the Wellington Regional Hospital campus, supports babies to adolescents with medical conditions or who may need paediatric surgery. It provides both hospital and outpatient services.

Women's Health Services provide tertiary level maternity care in Wellington and Hutt Regional Hospitals and a Primary Birthing Unit in Kenepuru. The provision of services from Women's Health encompass community-based primary LMC care and breastfeeding support, and tertiary level obstetrics, gynaecology, and other specialist services.

Kenepuru Community Hospital and Kapiti Health Centre provide secondary and community services based in Porirua and the Kapiti Coast

MHAIDS is the mental health, addictions and intellectual disability service for the Wairarapa District and Capital, Coast & Hutt Valley District, with multiple specialist facilities. Ratonga Rua-o- Porirua is our forensic, rehabilitation and intellectual disability inpatient unit.

Te Tiriti o Waitangi and Māori Health Outcomes

Māori are the indigenous peoples of Aotearoa. We have particular responsibilities and accountabilities through this founding document of Aotearoa. We value Te Tiriti and have adopted the following four goals, developed by the Ministry of Health, each expressed in terms of mana and the principles of:

- Mana whakahaere** Effective and appropriate stewardship or kaitiakitanga over the health and disability system. This goes beyond the management of assets or resources.
- Mana motuhake** Enabling the right for Māori to be Māori (Māori self-determination); to exercise their authority over their lives, and to live on Māori terms and according to Māori philosophies, values and practices including tikanga Māori.
- Mana tāngata** Achieving equity in health and disability outcomes for Māori across the life course and contributing to Māori wellness.
- Mana Māori** Enabling Ritenga Māori (Māori customary rituals) which are framed by Te Aō Māori (the Māori world), enacted through tikanga Māori (Māori philosophy & customary practices) and encapsulated within mātauranga Māori (Māori knowledge).

We will target, plan and drive our health services to create equity of health care for Māori to attain good health and well-being, while developing partnerships with the wider social sector to support whole of system change.

Te Mauri o Rongo

Te Mauri o Rongo recognises our connection to this work, to each other, to the people we serve and to our whakapapa. It speaks to specific behaviours that we will expect from each other guided by the pou of Te Mauri o Rongo:

Wairuatanga

Working with heart, the strong sense of purpose and commitment to service that health workers bring to their mahi.

Rangatiratanga

As organisations we support our people to lead. We know our people; we will grow those around us and be accountable with them in contributing to Pae Ora for all.

Whanaungatanga

We are a team, and together a team of teams. Regardless of our role, we work together for a common purpose. We look out for each other and keep each other safe. “Whiria te tangāta” – we will weave our people together.

Te Korowai Āhuru

A cloak which seeks to provide safety and comfort to the workforce.

District Responsibility

The district leadership have collective accountability for leading with integrity and transparency a progressive, high performing organisation, aimed at improving the health and independence of the community we serve and achieving equitable outcomes for all. The leadership team are responsible for achieving this aim, aligned with our Region, within the available resources, through a skilled, empowered, motivated and supported workforce in line with government and HNZ policy.

Te Whatu Ora is committed to Te Tiriti o Waitangi principles of partnership, participation, equity and protection by ensuring that guidelines for employment policies and procedures are implemented in a way that recognises Māori cultural practices.

We are committed to supporting the principles of Equal Employment Opportunities (EEO) through the provision and practice of equal access, consideration, and encouragement in the areas of employment, training, career development and promotion for all its employees.

Outpatient Perspective

Outpatients is a busy ambulatory area servicing the larger Wellington area across both Wellington Hospital and Kenepuru Hospital. The outpatient clinics are patient and Whanau-focused. The outpatient department consults, treats and refers patients across their healthcare journey from their First Specialist Appointments to Follow-ups. Ensuring advocacy, patient education and clinical decision making are top priorities of an Outpatient nurse, in an environment with constant changes to clinics. Being a team player is essential.

You will have a passion for nursing and an appreciation for the Outpatient team and the importance of this role across the patient's journey – Through to their first appointment and further follow-ups.

Purpose of the role

The Nurse (RN/EN) role is to meet the needs of people and whanau accessing our services using contemporary nursing care which is safe, appropriate and effective. The care is based on comprehensive assessment, ensures continuity, and is person/whānau centred, culturally appropriate and evidence-based. Quality improvement and patient safety and advocacy is an important part of this role.

As the successful candidate you will demonstrate core competencies in nursing, valuable communication skills, sound administration skills, be able to manage aseptic fields and the ability to problem solve and manage Specialist clinics to a very high standard. There is an expectation you will build sound professional relationships with your nursing colleagues, consultants and reception team members.

Here at the CCDHB we have a strong commitment to nursing education and excellence in patient care, there are many opportunities to further your education and be part of a committed and innovative team. We actively encourage ongoing professional development including post-graduate study and PDRP development. We have a committed nursing team which provides ongoing direction and support.

The RN/EN will respond to the changing needs of the district, performing other tasks as required. The RN/EN is expected to contribute to the implementation of District and nursing goals and values, and to promote Te Whatu Ora – Health New Zealand Capital, Coast and Hutt Valley as a centre of excellence for nursing practice.

Key Accountabilities

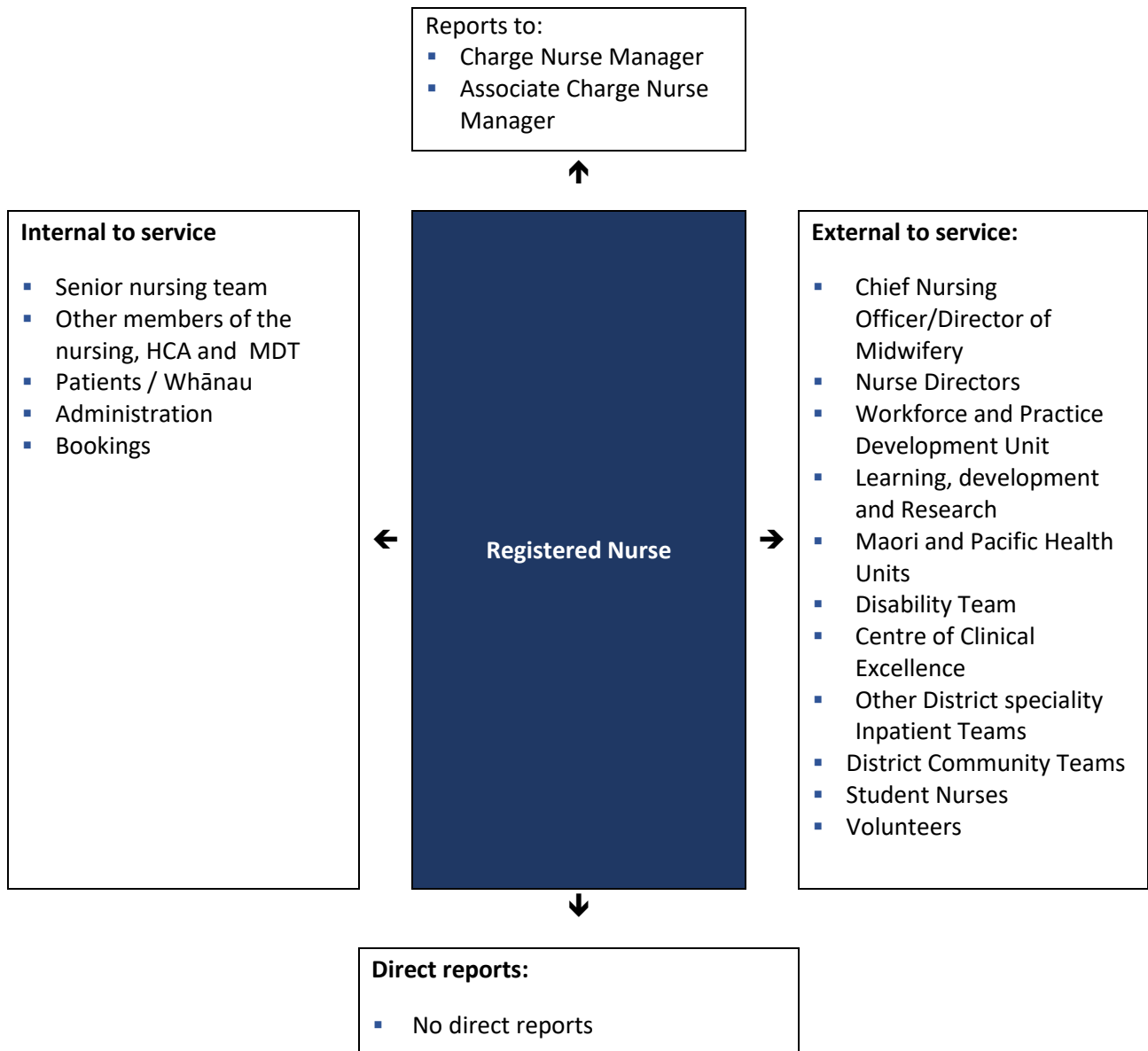
The following accountabilities derive from competencies outlined by Nursing Council of New Zealand. Competence is the combination of skills, knowledge, attitudes, values and abilities that underpin effective performance as a nurse.

In this Role Description the terms person or patient are used to refer to those who use health services, who in different settings may be referred to as tangata whaiora, health consumer or client.

Competency	Behaviours
<p>Pou one: Māori health Reflecting a commitment to Māori health, registered nurses support, respect and protect Māori rights while advocating for equitable and positive health outcomes. Nurses are also required to demonstrate kawa whakaruruhau by addressing power imbalances and working collaboratively with Māori. The descriptors below identify the requirements for registered nurses working in partnership with Māori.</p>	<ul style="list-style-type: none"> ▪ Engages in ongoing professional development related to Māori health and the relevance of te Titiri o Waitangi articles and principles; ▪ Advocates for health equity for Māori in all situations and contexts ▪ Understands the impact of social determinants, such as colonisation, on health and wellbeing; ▪ Uses te reo and incorporates tikanga Māori into practice where appropriate.
<p>Pou two: Cultural safety Cultural safety in nursing practice ensures that registered nurses provide culturally safe care that is inclusive, responsive and equitable. This requires nurses to reflect on their practice, understand their cultural identity and the power imbalances between the nurse and the recipient of care.</p>	<ul style="list-style-type: none"> ▪ Practises culturally safe care which is determined by the recipient. ▪ Challenges racism and discrimination in the delivery of nursing and health care. ▪ Engages in partnership with individuals, whānau and communities for the provision of health care. ▪ Advocates for individuals and whānau by including their cultural, spiritual, physical and mental health when providing care. ▪ Contributes to a collaborative team culture which respects diversity, including intersectional identities, and protects cultural identity by acknowledging differing worldviews, values and practices.
<p>Pou three: Whanaungatanga and communication A commitment to whanaungatanga and communication requires registered nurses to establish relationships through the use of effective communication strategies which are culturally appropriate and reflect concepts such as whānau-centred care and cultural safety. An understanding of different forms of communication enables the nurse to engage with the interprofessional healthcare team, advocate for innovative change where appropriate and influence the direction of the profession. The descriptors below identify the requirements for effective communication with ind</p>	<ul style="list-style-type: none"> ▪ Understands and complies with professional, ethical, legal and organisational policies for obtaining, recording, sharing and retaining information acquired in practice. ▪ Determines the language and communication needs (verbal and non-verbal) of people, whānau and communities. ▪ Incorporates professional, therapeutic and culturally appropriate communication in all interactions. ▪ Communicates professionally to build shared understanding with people, their whānau and communities. ▪ Assesses health-related knowledge, provides information and evaluates understanding to promote health literacy. ▪ Ensures documentation is legible, relevant, accurate, professional and timely. ▪ Uses appropriate digital and online communication. ▪ Provides, receives and responds appropriately to constructive feedback.

Competency	Behaviours
<p>Pou four: Pūkengatanga and evidence-informed nursing practice</p> <p>Pūkengatanga and evidence-informed nursing practice requires registered nurses to use clinical skills, coupled with critical thinking and informed by high quality and current evidence, to provide quality, safe nursing care. Evidence-informed practice prepares the nurse to differentially diagnose, plan care, identify appropriate interventions, lead the implementation and evaluate care provision and outcomes.</p>	<ul style="list-style-type: none"> ▪ Understands the wide range of assessment frameworks and uses the appropriate framework to undertake comprehensive assessments in the practice setting. ▪ Develops differential diagnoses based on a comprehensive assessment, clinical expertise and current evidence to inform the plan of care. ▪ Implements and evaluates effectiveness of interventions and determines changes to the plan of care. Te Kaunihera Tapuhi o Aotearoa Nursing Council of New Zealand 7 ▪ Coordinates and assigns care, delegates activities and provides support and direction to others. ▪ Safely manages medicines based on pharmacotherapeutic knowledge, including administration in accordance with policies and best practice guidelines. ▪ Supports individual and whānau choices of complementary therapies by ensuring they have sufficient information to make informed decisions about treatment options. ▪ Understands cultural preferences for complementary treatment, such as the use of rongoā, and supports integration into care. ▪ Demonstrates digital capability and online health literacy to support individuals, whānau and communities to use technology for managing health concerns and promoting wellbeing. ▪ Applies infection prevention and control principles in accordance with policies and best practice guidelines. ▪ Identifies, assesses and responds to emerging risks and challenging situations by adjusting priorities and escalating to the appropriate person. ▪ Understands and works within the limits of expertise and seeks guidance to ensure safe practice. ▪ Maintains awareness of trend
<p>Pou five: Manaakitanga and people-centred care</p> <p>Manaakitanga and people-centred care requires nurses to demonstrate compassion, collaboration and partnership to build trust and shared understanding between the nurse and people, whānau or communities. Compassion, trust and partnership underpin effective decision-making in the provision of care to support the integration of beliefs and preferences of people and their whānau.</p>	<ul style="list-style-type: none"> ▪ Ensures integrated relational and whakapapa-centred care to meet the needs of people and whānau. ▪ Upholds the mana of individuals, whānau and the nursing profession by demonstrating respect, kindness, honesty and transparency of decision-making in practice. ▪ Facilitates opportunities for people and whānau to share their views and actively contribute to care planning, decision-making and the choice of interventions. ▪ Establishes, maintains and concludes safe therapeutic relationships.
<p>Health and Safety</p>	<ul style="list-style-type: none"> ▪ Ensures that health and safety practice meets the requirements of Health and Safety at work legislation and district policies.

Key Relationships & Authorities



Capability Profile

Solid performance in the role requires demonstration of the following competencies. These competencies provide a framework for selection and development.

Competency	Behaviours
Team work	<ul style="list-style-type: none"> ▪ Collaborates with fellow team members and work groups to achieve service objectives ▪ Seeks out opportunities to support others in achieving goals ▪ Recognises and respects individual differences ▪ Actively contributes to and accepts consensus decisions
Commitment to Kawa Whakaruruhau	<ul style="list-style-type: none"> ▪ Demonstrates understanding and application of the principles of Te Tiriti O Waitangi Treaty of Waitangi in nursing practice ▪ Works towards achieving equitable health outcomes for Māori ▪ Supports tangata whenua/mana whenua led change to deliver mana motuhake in the design, delivery and monitoring of health care ▪ Supports Māori oversight and ownership of decision making processes necessary to achieve Māori health equity ▪ Supports the expression of hauora Māori models of care and mātauranga Māori
Equity	<ul style="list-style-type: none"> ▪ Commits to helping all of our people to achieve equitable health outcomes ▪ Demonstrates critical consciousness and on-going self-reflection and self-awareness in terms of the impact of their own culture on interactions and service delivery ▪ Supports the dismantling of policies, procedures and practices that cause inequity ▪ Supports Māori-led responses ▪ Supports Pacific-led responses ▪ Supports Disability-focused responses
Self-Management	<ul style="list-style-type: none"> ▪ Sets high personal standards and strives to achieve goals ▪ Is proactive and displays initiative ▪ Is resilient and able to adapt to change ▪ Understands and acknowledges personal and professional limitations ▪ Ability to work to deadlines to achieve outcomes
Communication/Interpersonal Skills	<ul style="list-style-type: none"> ▪ Demonstrates compassion ▪ Empathises with others and considers their needs and feelings ▪ Actively listens, drawing out information and checking understanding ▪ Communicates information effectively and accurately, both orally and in writing. Adjusts style to the recipients and considers their frame of reference

Competency	Behaviours
Professionalism	<ul style="list-style-type: none"> ▪ Maintain a strict sense of professional ethics, confidentiality and privacy and abide by the District Code of Conduct. ▪ Is aware of professional boundaries ▪ Shows courtesy, respect, caring for people and their whānau in all aspects of nursing practice
Flexibility	<ul style="list-style-type: none"> ▪ Ability to flex within the scope of Registered Nurse practice to meet the changing needs of people and their whānau and the population ▪ Responds positively and collegially, to requests for help from other team members

Experience and Capability

Essential Professional Qualifications / Accreditations / Registrations skills and experience:

- Registration with Nursing Council of New Zealand (NCNZ)
- A current Annual Practicing Certificate (APC) and scope appropriate to place of work
- Demonstrates an understanding of the significance of and obligations under Te Tiriti o Waitangi, including how to apply Te Tiriti principles in a meaningful way in the nursing role
- A commitment to achieving equitable outcomes for Māori
- A personal commitment to on-going learning and development including attainment/maintenance of PDRP
-

Someone well-suited to the role will place a high value on the following

- Commitment to Te Tiriti o Waitangi
- Living the District values
- Respect and collaboration in practice
- Delivering an exemplary standard of care
- Practice informed by research evidence
- Innovation and critical thinking
- Commitment to sustainable practice

Ma tini, ma mano, ka rapa te whai
By joining together we will succeed